

NOTICE:
6" RAISED CONCRETE SLAB TO SUPPORT NEW GENERATOR. 4,000 PSI CONCRETE SLAB DIMENSIONS SHALL BE BASED ON DIMENSIONS OF NEW GENERATOR PLUS 6" ON EACH SIDE. SEE DETAIL (D-8/8)

CONTRACTOR SHALL INSTALL ELECTRIC CONDUITS AS INDICATED. SEE ELECTRIC SHEET FOR SIZE AND SPECIFICATIONS

WARNING:
SEE EXISTING UTILITY NOTICE BELOW

CONTRACTOR SHALL RESET MANHOLE FRAME AND COVER FLUSH WITH NEW FINISH GRADE, TE=11.50±

WARNING:
MANHOLE WAS RECENTLY COATED WITH NEOPOXY, CONTRACTOR SHALL RECOAT ANY NEW OR DAMAGED SECTION OF MANHOLE.

AFTER 8" FORCE MAIN REROUTE IS COMPLETE, CONTRACTOR SHALL GROUT FILL AND PLUG ABANDONED 8" FORCE MAIN MANHOLE PENETRATION

PLUG EXISTING FORCE MAIN WITH 12" CONCRETE PLUG

CONTRACTOR SHALL CONNECT 12" AIR VENT LINE TO NEW ODOR CONTROL UNIT AS REQUIRED BY MANUFACTURER

SEE SHEET 2 FOR CONTINUATION OF SILT FENCE LAYOUT

NOTICE:
6" RAISED CONCRETE SLAB TO SUPPORT NEW ODOR CONTROL UNIT. 4,000 PSI CONCRETE SLAB DIMENSIONS SHALL BE BASED ON DIMENSIONS OF NEW ODOR CONTROL UNIT PLUS 6" ON EACH SIDE. SEE DETAIL (D-8/8)

CONTRACTOR SHALL COORDINATE WITH MPW FOR INSTALLATION OF A NEW 1 1/2" WATER SERVICE TO PUMP STATION SITE INCLUDING WATER METER AND BACKFLOW PREVENTER.

EXISTING DI
TE=9.51
IE(a)=6.36
IE(b)=6.42

SSMH
TE=10.51
IE(a)=3.52
IE(b)=2.09

**NEW PUMP STATION-30
SITE LAYOUT AND GRADING**
SCALE 1" = 10'

4" PERSONNEL GATE
24"x12" INLINE DRAIN WITH STANDARD H-20 GRATE, MANUFACTURED BY ADS OR APPROVED EQUAL
TE=11.00
IE=9.25

SEE PUMP STATION PIPING LAYOUT ON SHEETS 5, 6, 7, AND 8 FOR DETAILS OF PIPING, VALVES, FITTINGS, NEW WET WELL, AND NEW TOP SLAB

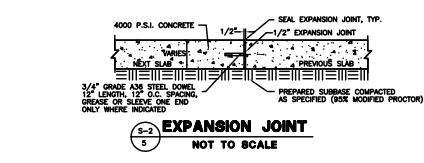
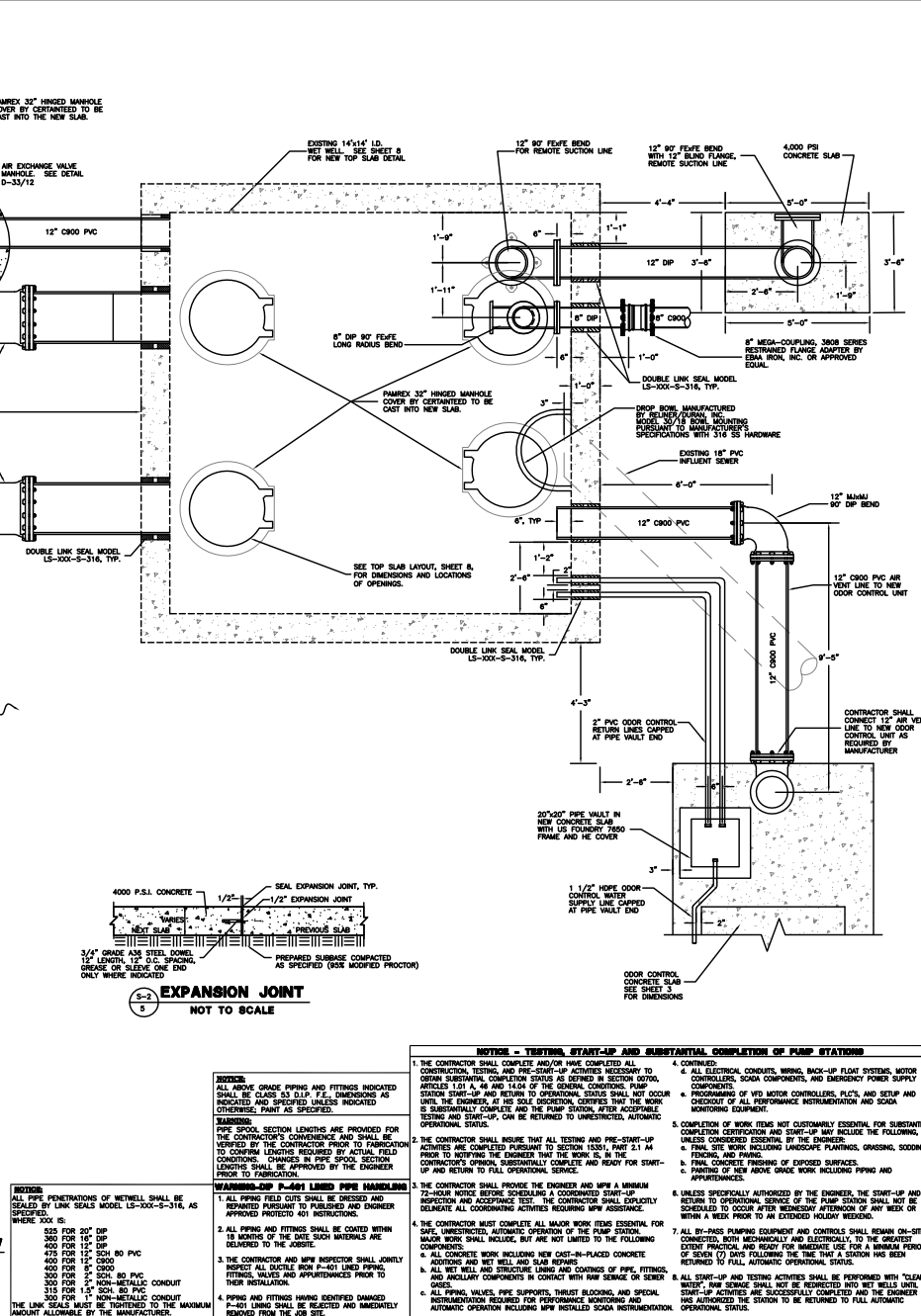
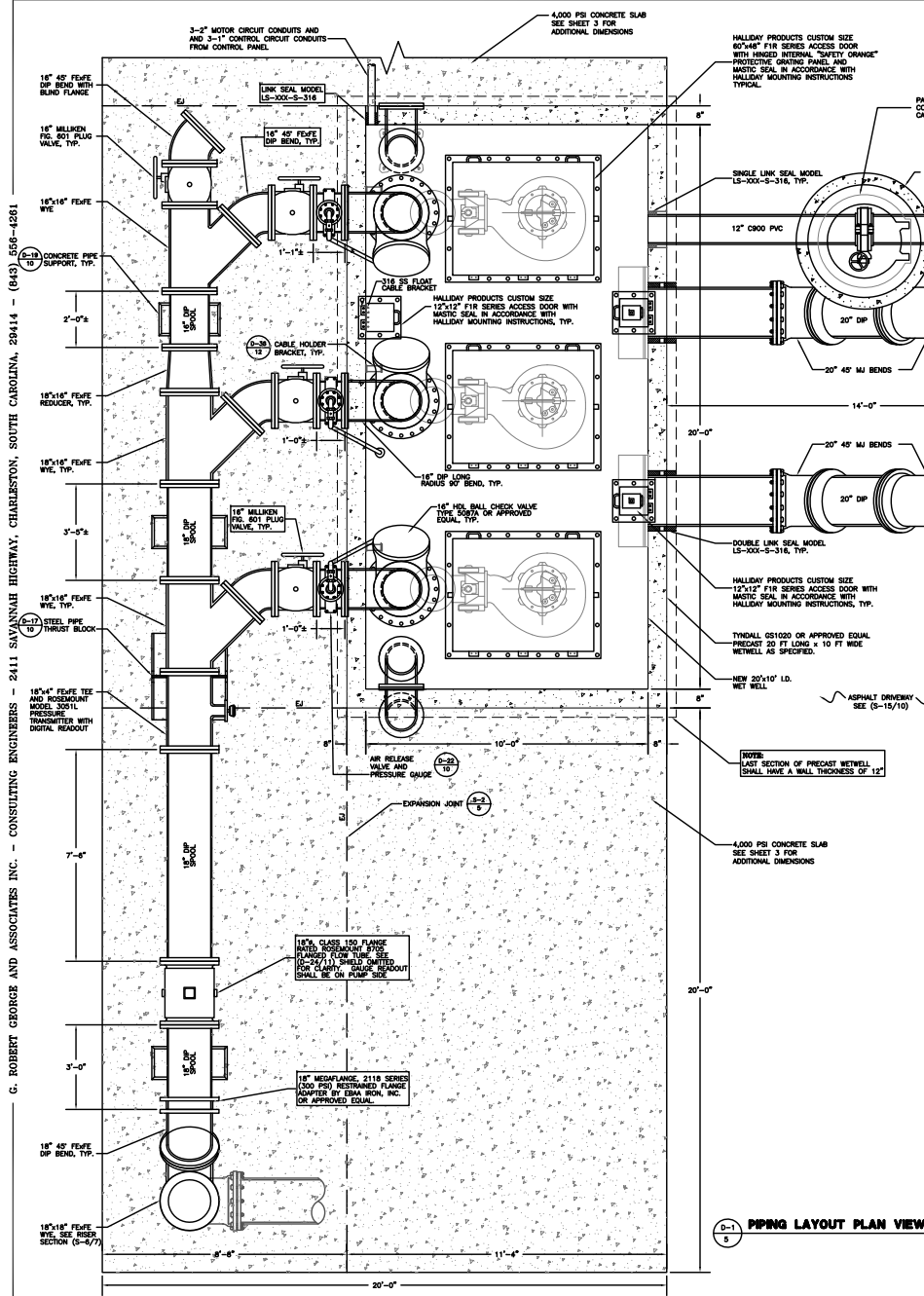
WARNING:
CONTRACTOR SHALL NOT DAMAGE EXISTING WOODEN FENCE. ANY DAMAGE MUST BE REPAIRED BY CONTRACTOR AT NO ADDITIONAL COST TO MPW



G. WOODRUFF RESOURCE AND ASSOCIATES, INC., CONSULTING ENGINEERS, 2411 SAVANNAH HIGHWAY, SPANDESION, SOUTH CAROLINA, 29414 (04) 300-4201

COLEMAN BLVD (S-10-701)
90' R/W

SEE SHEET 9 FOR NEW FORCE MAIN TIE IN DETAIL



- NOTICE - TESTING, START-UP AND SUBSTANTIAL COMPLETION OF PUMP STATION**
1. THE CONTRACTOR SHALL COMPLETE AND/OR HAVE COMPLETED ALL CONSTRUCTION, TESTING AND PRE-START-UP ACTIVITIES NECESSARY TO OBTAIN SUBSTANTIAL COMPLETION STATUS AS DEFINED IN SECTION 0200, COMPLETION.
 2. THE CONTRACTOR SHALL INSURE THAT ALL TESTING AND PRE-START-UP ACTIVITIES ARE COMPLETED PURSUANT TO SECTION 1200, PART 2.1.14, PRIOR TO NOTIFYING THE ENGINEER THAT THE WORK IS IN THE CONTRACTOR'S OPINION SUBSTANTIALLY COMPLETE AND READY FOR START-UP AND RETURN TO FULL OPERATIONAL SERVICE.
 3. THE CONTRACTOR SHALL PROVIDE THE ENGINEER AND MPW A MINIMUM 72-HOUR NOTICE BEFORE SCHEDULING A COORDINATED START-UP INSPECTION AND ACCEPTANCE TEST. THE CONTRACTOR SHALL EXPLICITLY SCHEDULE ALL COORDINATING ACTIVITIES REQUIRING MPW ASSISTANCE.
 4. THE CONTRACTOR MUST COMPLETE ALL MAJOR WORK ITEMS ESSENTIAL FOR SAFE, UNRESTRICTED, AUTOMATIC OPERATION OF THE PUMP STATION. MAJOR WORK SHALL INCLUDE, BUT ARE NOT LIMITED TO THE FOLLOWING COMPONENTS:
 - a. ALL CONCRETE WORK INCLUDING NEW CAST-IN-PLACE CONCRETE AND REPAIRS AND RET WALL AND SLAB REPAIRS
 - b. ALL MET WELL AND STRUCTURE LINING AND COATINGS OF PIPE, FITTINGS, AND ANCHORAGE COMPONENTS IN CONTACT WITH RAW SEWAGE OR SEWER GASES.
 - c. ALL PIPING, VALVES, PIPE SUPPORTS, TRUST BLOCING, AND SPECIAL INSTRUMENTATION REQUIRED FOR PERFORMANCE MONITORING AND AUTOMATIC OPERATION INCLUDING MPW INSTALLED SOGA INSTRUMENTATION.
 4. CONTINUED:
 - a. ELECTRICAL CONTROLS, WIRING, BACK-UP FEED SYSTEMS, MOTOR CONTROLLERS, SOGA COMPONENTS, AND EMERGENCY POWER SUPPLY CONTROLS.
 - b. PROGRAMMING OF VFD MOTOR CONTROLLERS, PLOTS, AND SETUP AND CHECKOUT OF ALL PERFORMANCE INSTRUMENTATION AND SOGA MONITORING EQUIPMENT.
 - c. COMPLETION OF WORK ITEMS NOT CUSTOMARILY ESSENTIAL FOR SUBSTANTIAL COMPLETION AND START-UP MAY INCLUDE THE FOLLOWING, UNLESS CONSIDERED ESSENTIAL BY THE ENGINEER:
 - i. FINAL SITE WORK INCLUDING LANDSCAPE PLANTINGS, GRASSING, SOODING, FENCING, AND PAVING.
 - ii. FINAL CONCRETE FINISHING OF EXPOSED SURFACES.
 - iii. PAINTING OF NEW ABOVE GRADE WORK INCLUDING PIPING AND APPURTENANCES.
 - d. UNLESS SPECIFICALLY AUTHORIZED BY THE ENGINEER, THE START-UP AND RETURN TO OPERATIONAL SERVICE OF THE PUMP STATION SHALL NOT BE SCHEDULED TO OCCUR AFTER WEDNESDAY AFTERNOON OF ANY WEEK OR WITHIN A WEEK PRIOR TO AN EXTENDED HOLIDAY WEEKEND.
 - e. ALL BY-PASS PUMPING EQUIPMENT AND CONTROLS SHALL REMAIN ON-SITE, CONNECTED, BOTH MECHANICALLY AND ELECTRICALLY TO THE GREATEST EXTENT PRACTICAL AND READY FOR IMMEDIATE USE FOR A MINIMUM PERIOD OF SEVEN (7) DAYS FOLLOWING THE TIME A STATION HAS BEEN RETURNED TO FULL AUTOMATIC OPERATIONAL STATUS.
 - f. ALL START-UP AND TESTING ACTIVITIES SHALL BE PERFORMED WITH "CLEAR WORK". PUMP STATIONS SHALL NOT BE RE-TESTED INTO NET BELLS UNTIL ALL TESTING ACTIVITIES ARE SUCCESSFULLY COMPLETED AND THE ENGINEER HAS AUTHORIZED THE STATION TO BE RETURNED TO FULL AUTOMATIC OPERATIONAL STATUS.
- NOTICE:** ALL ABOVE GRADE PIPING AND FITTINGS INDICATED SHALL BE CLASS 150 P.F.E. DIMENSIONS AS INDICATED AND SHOPPED UNLESS INDICATED OTHERWISE. PAINT AS SPECIFIED.
- WARNING - PIPING P-S-401 LIMITED PIPE HANDLING**
1. ALL PIPING FIELD CUTS SHALL BE DRESSED AND REPAIRED PURSUANT TO PUBLISHED AND ENGINEER APPROVED PROTECTO 401 INSTRUCTIONS.
 2. ALL PIPING AND FITTINGS SHALL BE COATED WITHIN 15 MONTHS OF THE DATE SUCH MATERIALS ARE DELIVERED TO THE JOBSITE.
 3. THE CONTRACTOR AND MPW INSPECTOR SHALL JOINTLY INSPECT ALL DUSTLE BOX P-S-401 LINED PIPING, FITTINGS, VALVES AND APPURTENANCES PRIOR TO THEIR INSTALLATION.
 4. PIPING AND FITTINGS HAVING IDENTIFIED DAMAGED P-S-401 LINING SHALL BE REJECTED AND IMMEDIATELY REMOVED FROM THE JOB SITE.
- NOTICE:** PIPE SPOOL SECTION LENGTHS ARE PROVIDED FOR THE CONTRACTOR'S CONVENIENCE AND SHALL BE REVISED BY THE CONTRACTOR PRIOR TO FABRICATION TO CONFIRM LENGTHS REQUIRED BY ACTUAL FIELD CONDITIONS. CHANGES IN PIPE SPOOL SECTION LENGTHS SHALL BE APPROVED BY THE ENGINEER PRIOR TO FABRICATION.
- NOTICE:** ALL PIPE PENETRATIONS OF RET WALL SHALL BE SEALED BY LINK SEALS MODEL LS-300-S-316, AS SHOWN ON THIS SHEET. SEE SHEET 3 FOR ADDITIONAL DIMENSIONS.
- NOTICE:** LAST SECTION OF PRECAST RET WALL SHALL HAVE A WALL THICKNESS OF 12\"/>

G. ROBERT GEORGE AND ASSOCIATES, INC.
CONSULTING ENGINEERS, ARCHITECTS
AND LAND SURVEYORS

PROJECT NO.: GRG
DRAWN BY: TB
CHECKED BY: GRG
APPROVED BY: GRG
DATE: 4-4-11
JOB NO.: 1762-28
SHEET 5 OF 12

NOT TO SCALE

GRAPHIC SCALE

DATE

REVISIONS

PROJECT NO.: GRG
DRAWN BY: TB
CHECKED BY: GRG
APPROVED BY: GRG
DATE: 4-4-11
JOB NO.: 1762-28
SHEET 5 OF 12

5

THIS DRAWING IS AN INSTRUMENT OF SERVICE AND THE PROPERTY OF G. ROBERT GEORGE AND ASSOCIATES, INC. AND SHALL NOT BE REPRODUCED OR USED IN ANY WAY, WHATSOEVER, WITHOUT THE WRITTEN PERMISSION OF G. ROBERT GEORGE AND ASSOCIATES, INC.